



WWW.SMITTYBILT.COM

## Installation Instructions

Replacement Top (Part # 9085235)  
2010 and Up Unlimited (4 Door)  
Replacement Top (Part # 9075235)  
2010 and Up JK (2 Door)

**NOTE:** Read entire instructions thoroughly before installing this product. It is recommended to install this Top when temperatures are above 70 degrees. The top can contract and stretch an inch or more. If the Top has any wrinkles this is caused from packaging but once the top relaxes they will go away. You must have the factory bow assembly and door surrounds in order to install this product. Pictures are for example use, actual vehicle may differ.

**Step 1:** If there is currently a soft top on the vehicle, remove it and save the screws removed from where the top attaches to the rear bows. Once the windows are removed and the screws from the rear bows, you will need to fold your top down.

Remove the two screws from the front two corner plastic pieces. (Fig 1) Save hardware for later use. Now you will need to raise the bow assembly and lock the header into the windshield frame. Carefully pull the softtop forward over the windshield frame and onto the hood. (Fig 2)

To remove the top from the header piece remove all of the screws holding the top portion of the header onto the base. (Fig 3) Keep screws for later use. You may now remove the top portion of the header and the top completely.



(Fig 1)



(Fig 2)



(Fig 3)

**Step 2:** Drape your new top over the hood upside down with the front of the top up on the windshield header. (Fig 2)

**Step 3:** Place the sewn in plastic tube on the top on the front edge of the header inside the extrusion; making sure it's centered in the header. (Fig 4, 5)

**For Technical Support/Warranty Information please call 310-762-9944**

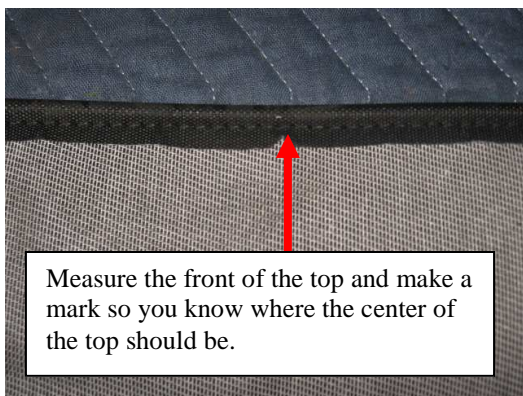
**Smittybilt, 400 West Artesia Blvd, Compton, CA 90220**



WWW.SMITTYBILT.COM

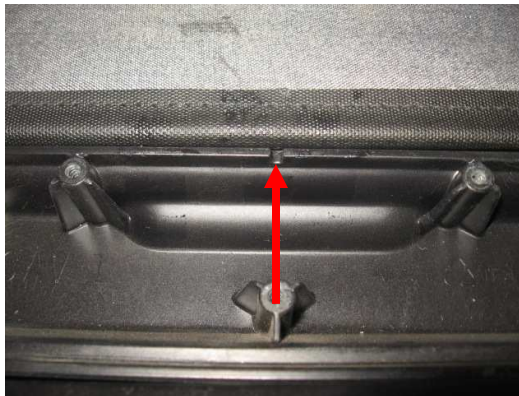
## Installation Instructions

Replacement Top (Part # 9085235)  
2010 and Up Unlimited (4 Door)  
Replacement Top (Part # 9075235)  
2010 and Up JK (2 Door)



Measure the front of the top and make a mark so you know where the center of the top should be.

(Fig 4)



(Fig 5)

**Step 4:** Use masking tape to help hold the top along the header. (Fig 6, 7)



(Fig 6)



(Fig 7)

**Step 5:** Re-install the top portion of the header back on with the previously removed screws. This will clamp the front of the top inside the header. (Fig 8, 9)

**Step 6:** Un-clamp the front header from the windshield frame and fold the front section of bow back over top while draping the top back around the header. Pull the front corners back tight around header so fabric is smooth around header. (Fig 10, 11)

**Step 7:** Install the cable anchor and the plastic top flap back on the end of the header with the previously removed hardware. (Fig 12,13)

**For Technical Support/Warranty Information please call 310-762-9944**

**Smittybilt, 400 West Artesia Blvd, Compton, CA 90220**



WWW.SMITTYBILT.COM

## Installation Instructions

Replacement Top (Part # 9085235)  
2010 and Up Unlimited (4 Door)  
Replacement Top (Part # 9075235)  
2010 and Up JK (2 Door)



(Fig 8)



(Fig 9)



(Fig 10)



(Fig 11)



(Fig 12)



(Fig 13)

For Technical Support/Warranty Information please call 310-762-9944

Smittybilt, 400 West Artesia Blvd, Compton, CA 90220



WWW.SMITTYBILT.COM

## Installation Instructions

Replacement Top (Part # 9085235)  
2010 and Up Unlimited (4 Door)  
Replacement Top (Part # 9075235)  
2010 and Up JK (2 Door)

**Step 8:** Install the foam strip on bottom front corners. (Fig 14)

**Step 9:** Install the foam pad on each edge of the bottom of the header (Fig 15) Note: there is a driver and a passenger side.



(Fig 14)



(Fig 15)

**Step 10:** Raise the header back down on the windshield frame. (Do not clamp) Drape the top back completely over the bow assembly. (Fig 16) Note: make sure the pivot assembly on the top on the door surrounds is locked/latched into place. (Fig 17)



(Fig 16)



(Fig 17)

**Step 11:** Attach the cable spring end to the bracket on the bow, crimp to secure. (Fig 18, 19)

**For Technical Support/Warranty Information please call 310-762-9944**

**Smittybilt, 400 West Artesia Blvd, Compton, CA 90220**



WWW.SMITYBILT.COM

## Installation Instructions

Replacement Top (Part # 9085235)  
2010 and Up Unlimited (4 Door)  
Replacement Top (Part # 9075235)  
2010 and Up JK (2 Door)



(Fig 18)



(Fig 19)

**Step 12:** Clamp the front windshield header down onto windshield frame hooks completely. (Fig 20)

**Step 13:** Now secure the flap to the middle bow, again using the hardware previously removed. (Fig 21)  
(4-Door only)

**Step 14:** Make sure the rear of the top is centered over the rear bow. Then secure the flaps on the top to the bow using the previously removed hardware. (Fig 22)



(Fig 20)



(Fig 21)

**For Technical Support/Warranty Information please call 310-762-9944**

**Smittybilt, 400 West Artesia Blvd, Compton, CA 90220**



WWW.SMITTYBILT.COM

## Installation Instructions

Replacement Top (Part # 9085235)  
2010 and Up Unlimited (4 Door)  
Replacement Top (Part # 9075235)  
2010 and Up JK (2 Door)

**Step 15:** Wrap the front flap around the front part of the bow and fasten secure by fastening the Velcro. (Fig 23)



(Fig 22)



(Fig 23)

**Step 16:** Pull down the rear corner of the bow assembly from the outside and attach the rear corner of the top by sliding the sewn in extrusion into the body tub rail. (Fig 24)



(Fig 24)



(Fig 25)

**Step 17:** Start the zipper on the rear quarter windows. Zip closed a few inches. (Fig 25)

**For Technical Support/Warranty Information please call 310-762-9944**

**Smittybilt, 400 West Artesia Blvd, Compton, CA 90220**



WWW.SMITTYBILT.COM

## Installation Instructions

Replacement Top (Part # 9085235)  
2010 and Up Unlimited (4 Door)  
Replacement Top (Part # 9075235)  
2010 and Up JK (2 Door)

**Step 18:** Fold the plastic extrusion sewn along the front of the windows into the channel on the door surround. (Fig 26, 27)



(Fig 26)



(Fig 27)



(Fig 28)

**Step 19:** Zip the windows on completely (Fig 28) and secure the bottom of it by sliding the plastic extrusion on the window into the body tub rail. (Fig 29) and fasten Velcro on top of windows (Fig 30)



(Fig 29)



(Fig 30)

For Technical Support/Warranty Information please call 310-762-9944

Smittybilt, 400 West Artesia Blvd, Compton, CA 90220



WWW.SMITYBILT.COM

## Installation Instructions

Replacement Top (Part # 9085235)  
2010 and Up Unlimited (4 Door)  
Replacement Top (Part # 9075235)  
2010 and Up JK (2 Door)

**Step 20:** Snap the two rear elastic window straps on the rear bow corners. (Fig 31)



(Fig 31)



(Fig 32)

**Step 21:** Zip the rear window in and slide the factory tailgate bar onto the bottom of the window. (Fig 32)

**Step 22:** Attach each end of the tailgate bar into the brackets on each end of the tailgate. (Fig 33) Velcro the flap on the inside of each bottom corner of the rear window. (Fig 34)



(Fig 33)



(Fig 34)

**Step 23:** Installation is now complete. (Fig 35, 36)

**For Technical Support/Warranty Information please call 310-762-9944**

**Smittybilt, 400 West Artesia Blvd, Compton, CA 90220**





WWW.SMITTYBILT.COM

## Installation Instructions

Replacement Top (Part # 9085235)  
2010 and Up Unlimited (4 Door)  
Replacement Top (Part # 9075235)  
2010 and Up JK (2 Door)



(Fig 35)



(Fig 36)

### **Troubleshooting**

Due to variances in vehicles and climate conditions the following tips may help during installation.

- Install when temperature is above 70 degrees, The fabric can contract and stretch an inch or more. Any wrinkles will go away once it "relaxes"
- Do not fully clamp the front header down until top is completely on.
- Install with help from a friend.
- Make sure door surrounds are installed correctly.
- Install Side rear windows before installing the rear corners on the body.
- Make mental note on how your OEM top fit.
- Refer to owners' manual for bow assembly operation.

Compliment your new Top with other quality Smittybilt products



Seat Covers



Sure-Steps



Bumpers

**For Technical Support/Warranty Information please call 310-762-9944**

**Smittybilt, 400 West Artesia Blvd, Compton, CA 90220**



WWW.SMITTYBILT.COM

## Installation Instructions

Replacement Top (Part # 9085235)  
2010 and Up Unlimited (4 Door)  
Replacement Top (Part # 9075235)  
2010 and Up JK (2 Door)

### Care and Maintenance

-**TOP**, The top should only be washed with soap and warm water. Do not use an abrasive cleaner or rag. Especially on the windows.

-**SNAPS**, Keep the snaps (if applicable) clean and silicone lubrication will help prevent them from sticking together.

-**SEAMS**, If seeps happen to occur in seams they can be treated with a Scotchguard type of spray. Patches can also be applied on the inside of the top in the case of a rip or tear.

-**Zippers**, Keep zippers clean and apply a silicone lubricant to them to help prevent damaged to them and keep them operating smoothly. Zipper heads can also be repaired if they happen to spread apart by using pliers to gently squeeze the head back together

### Limited Warranties

Smittybilt's products are covered under the following limited warranties only. Note that the duration of the limited warranty differs according to the material and finish of the product purchased. Subject to the duration and conditions of the limited warranty stated below, Smittybilt warrants to the original retail purchaser that its products are free from defects in material and workmanship. All other warranties and representations express or implied, are hereby disclaimed, including fitness for merchantability and buyer's intended use or purpose. All parts are sold "AS IS" except for the limited warranties granted herein. Buyer assumes all risks as to the selection, suitability and performance of all goods and products selected. This limited warranty does not cover damage or impairment in any part due to misuse, improper installation, accident or contact with on-road or off-road hazards, product modification, improper or inadequate cleaning and/or maintenance. Smittybilt is not responsible for items damaged during shipping. This warranty is not transferable from the original buyer. For the original Buyer to be eligible for the limited warranty coverage, the Buyer must provide proof of purchase. Smittybilt strongly recommends returning the warranty registration card.

Customer's remedy hereunder shall be limited only to repair or replacement (at Smittybilt's option) of any defective part(s) returned to Smittybilt at customer's expense. The determination of whether or not a returned part is defective or subject to coverage under the limited warranties stated herein shall be made at Smittybilt's sole discretion.

To assure product quality, Smittybilt reserves the right to change product design, material, specification and finishes without prior notice to customers. This limited warranty gives you specific legal rights and you may also have other rights, which may vary from state to state. Some states do not allow limitations on how long an implied warranty lasts, so the above limitations may not apply as to you. Also, some states do not allow the exclusion or limitation of incidental or consequential damages, so the above limitations or exclusions may not apply to you. Smittybilt reserves the right to discontinue product lines and substitute products, or provide other remedies than those listed in this limited warranty for those discontinued products.

### Warning

Rollover and other types of vehicle accidents may result in serious injury or death to you, your passengers and others sharing the road. Smittybilt accessories are decorative and are not intended to reduce or avoid injury or damage in the event of an accident. The weight and location of Smittybilt accessories may affect your vehicles' handling, stability and performance, creating an increased risk of accident or rollover. Before installing any accessory, check state laws and assure that the accessory will not obscure any lights or interfere with proper operation on your vehicle's safety equipment. Consult your owner's manual and the Smittybilt instructions, or additional safety information. Smittybilt products, nor the warnings contained herein, are not a substitute for your safe driving. Don't drink and drive, always use seat belts and don't drive faster than conditions permit.

**For Technical Support/Warranty Information please call 310-762-9944**

**Smittybilt, 400 West Artesia Blvd, Compton, CA 90220**