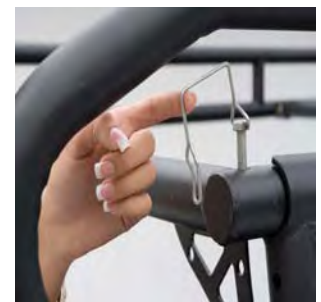




## Installation Instructions *CONTRACTORS RACK* *PART # 18604*

**NOTE:** Please read this information entirely before installing. To obtain correct installation, we recommend you follow these step-by-step instructions carefully. Please take care when installing this product to protect the finish and your investment.



For Technical Support/Warranty Information please call 310-762-9944

Smittybilt, 400 West Artesia Blvd, Compton, CA 90220 / [www.smittybilt.com](http://www.smittybilt.com)



# Installation Instructions

## CONTRACTORS RACK

### PART # 18604

## IMPORTANT SAFETY PRECAUTIONS

- Make sure loads are always evenly distributed and balanced
- Do not carry or load rack with rear cross bar removed
- This rack is rated at 800lb capacity (evenly distributed)
- Randomly check to make sure all hardware is tight and secure.

### Component List

### Hardware List

ITEM #	QTY	DESCRIPTION	ITEM#	DESCRIPTION	SETS
1	2	Front side rails	(Each set includes 1 bolt, 2 flat washers, 1 lock washer, 1 nut)		
2	2	Rear side-rails	A	<b>M10x70 bolt set ( Center cross bar)</b>	<b>2</b>
3	1	Front hoop bar	B	<b>M12x90 bolt set</b>	<b>2</b>
4	2	Front vertical uprights (P & D)	C	<b>M12x65 bolt set</b>	<b>8</b>
5	2	Rear vertical uprights (P & D)	D	<b>M10x70 bolt set</b>	<b>6</b>
6	1	Driver side front mounting plate	E	<b>M8x45 bolt set ( Center cross bar)</b>	<b>2</b>
7	1	Driver side rear mounting plate	F	<b>M18x90 bolt set</b>	<b>4</b>
8	1	Passenger side front mount plate	G	<b>M12x40 bolt set</b>	<b>12</b>
9	1	Passenger side rear mount plate	H	<b>“J” Hook (with flat washer and nut)</b>	<b>8</b>
10	1	Front Horizontal cross bar	I	<b>Quick release pin</b>	<b>4</b>
11	1	Adjustable Center cross bar			
12	1	Rear Horizontal cross bar			

<b>TOOLS REQUIRED</b>
1. Adjustable Wrench
2. Ratchet/Socket Set
3. Tape Measure
4. Rubber Mallet/Hammer

**For Technical Support/Warranty Information please call 310-762-9944**

**Smittybilt, 400 West Artesia Blvd, Compton, CA 90220 / [www.smittybilt.com](http://www.smittybilt.com)**



**Installation Instructions**  
**CONTRACTORS RACK**  
**PART # 18604**



**A**



**B**



**C**



**D**



**E**



**F**



**G**



**H**

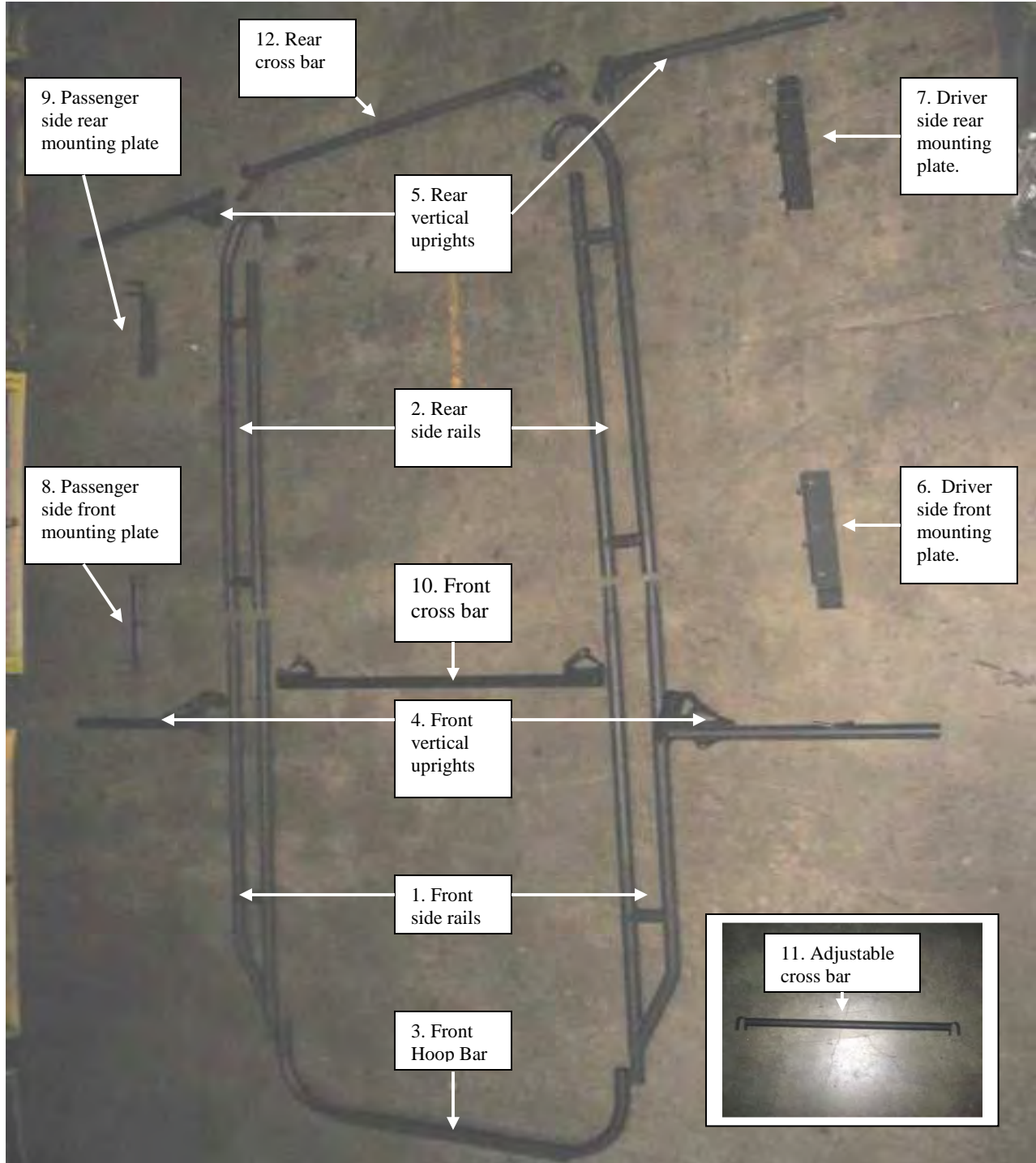


**I**

**For Technical Support/Warranty Information please call 310-762-9944**



# Installation Instructions CONTRACTORS RACK PART # 18604



For Technical Support/Warranty Information please call 310-762-9944



# Installation Instructions

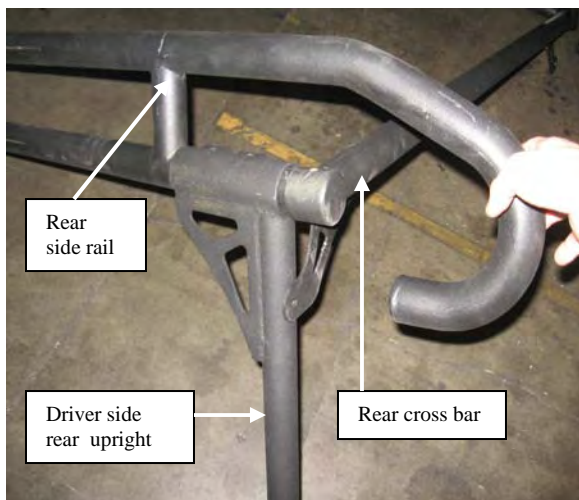
## CONTRACTORS RACK

### PART # 18604

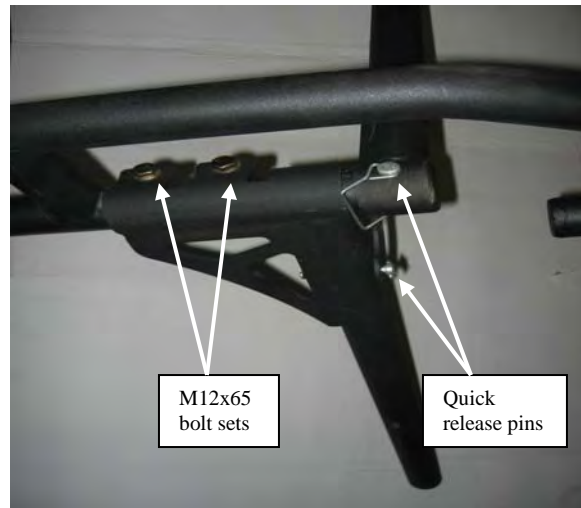
**NOTE:** It is recommended to have an assistant while assembling and installing this product.

### REAR SECTION ASSEMBLY

**STEP 1:** Slide the rear driver side vertical upright (#5) onto the rear side rail (#2), then slide the rear cross bar (#12) over the end of the side rail. (Fig A)  
Attach using the M12x65 bolts and two quick release pins. (Fig B) Tighten snug but not completely. Repeat same steps for rear passenger side. (Fig C)



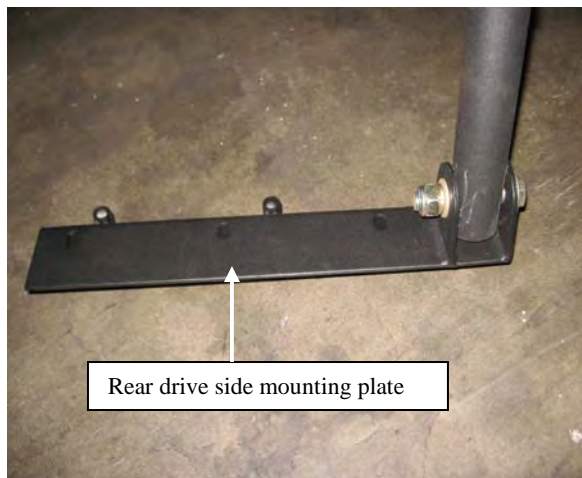
(Fig A)



(Fig B)



(Fig C)



(Fig D)

For Technical Support/Warranty Information please call 310-762-9944

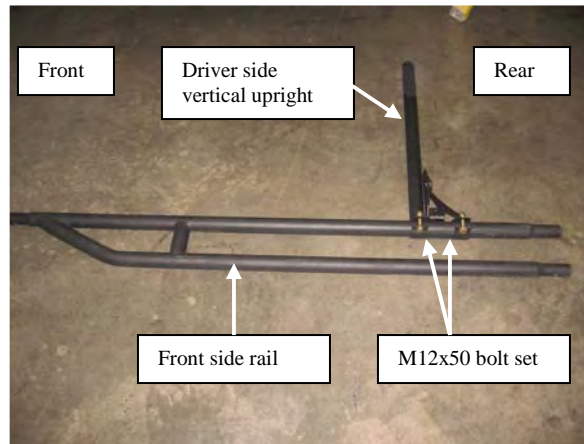


## Installation Instructions CONTRACTORS RACK PART # 18604

**STEP 2:** Attach the driver side rear mounting plate (#6) to the bottom of the upright using one M18x90 bolt set. (Fig D) (**NOTE:** The driver side front and passenger side rear mounting plates are the same, as is the passenger side front and driver side rear) Tighten snug, but not completely. Repeat the same step for the rear passenger side. You are now down assembling the rear section (Fig E)



(Fig E)



(Fig F)

### FRONT SECTION ASSEMBLY

**STEP 3:** Slide the driver side front upright (# 4D) over the bottom tube on the front side rail. (**NOTE:** The gusset supports on the front uprights will be facing towards the rear) Attach using two M12x50 bolt sets. (Fig F) Do not tighten completely. Repeat this for the opposite side using the passenger side front upright.

**STEP 4:** Slide the front driver side rail into the rear side rail. (**NOTE:** You may need assistance with this step. Secure the two side rails together with two M10x70 bolts.(Fig G,H) You may tighten completely. Repeat step for passenger side.

**STEP 5:** Attach the driver side mounting plate to the upright using one M18x90 bolt set. (Fig I) Repeat on passenger side. Do not tighten completely.

**STEP 6:** Install front cross bar to the two front uprights using two M8x45 bolt sets and two M10x70 bolt sets. (Fig J,K) Tighten snug but not completely.

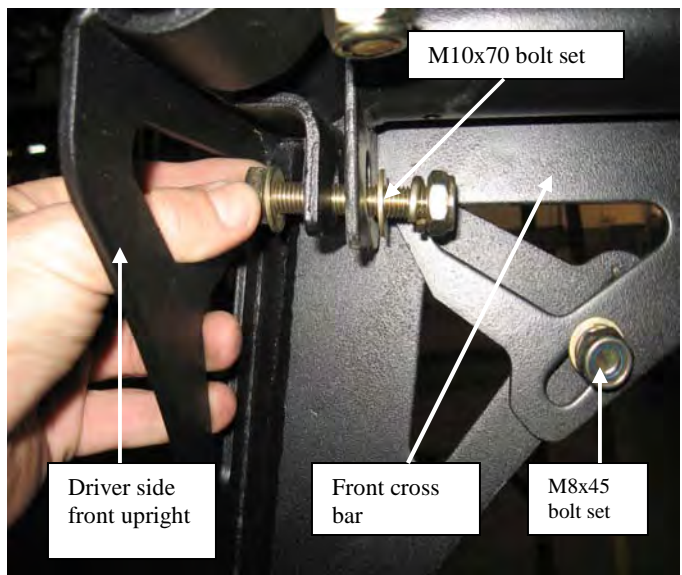
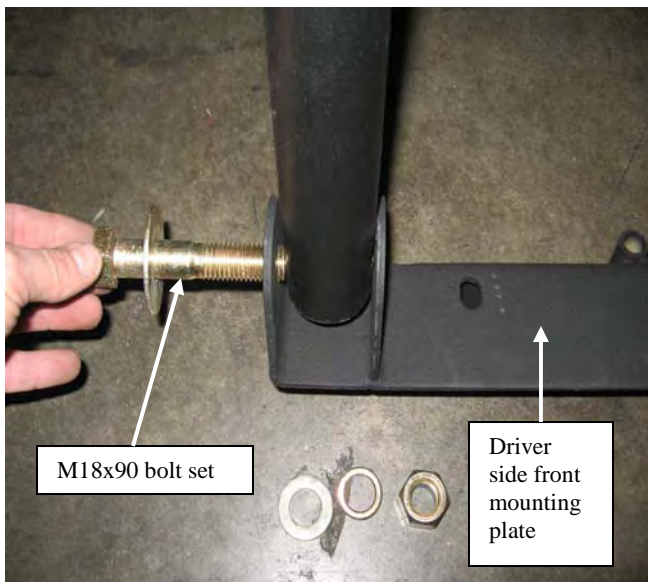
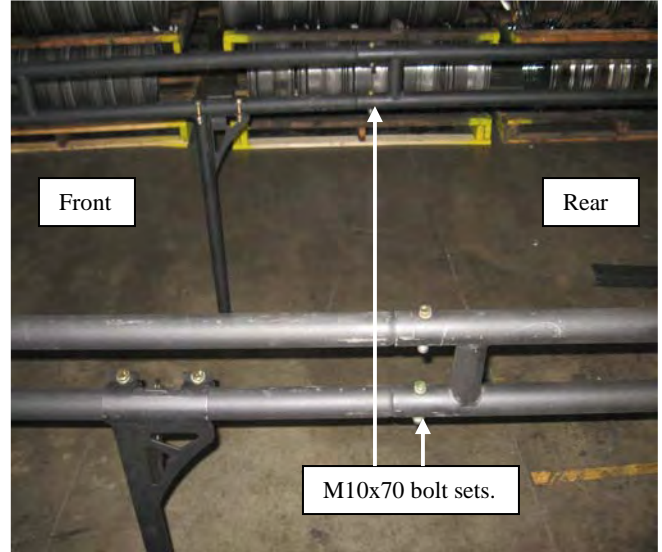
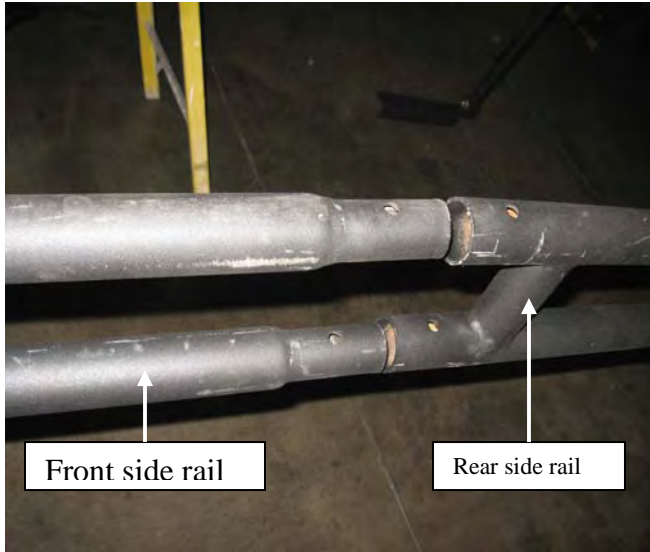
For Technical Support/Warranty Information please call 310-762-9944



# Installation Instructions

## CONTRACTORS RACK

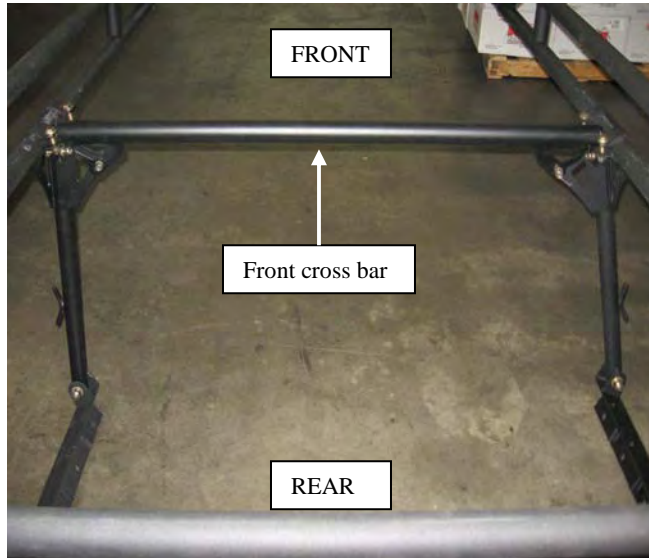
### PART # 18604



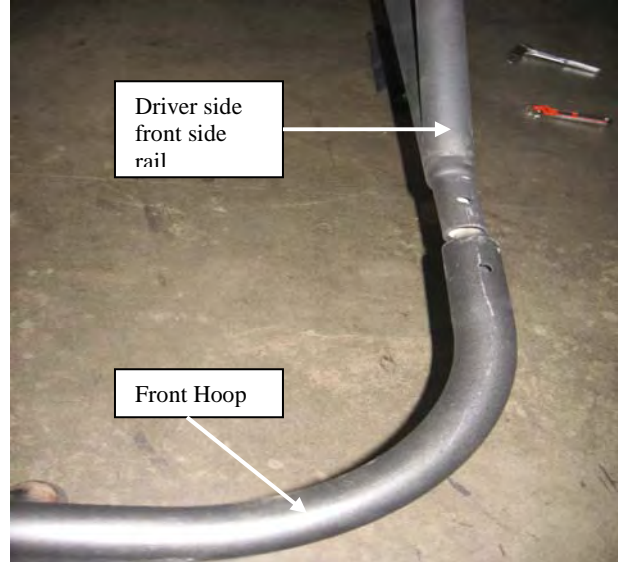
For Technical Support/Warranty Information please call 310-762-9944



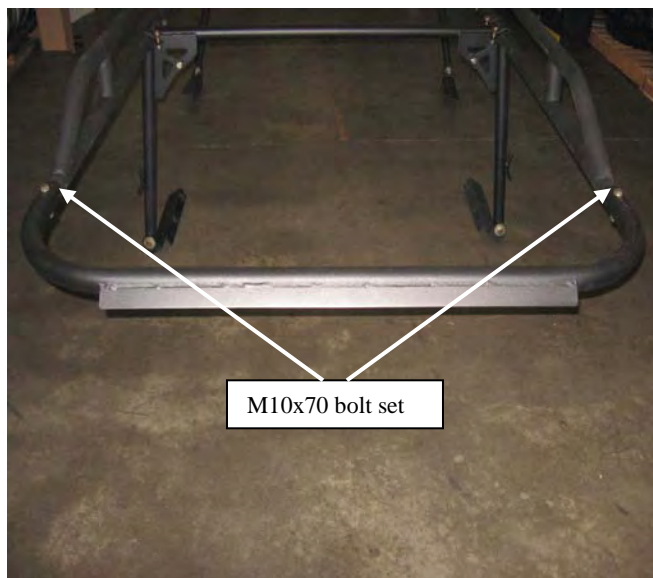
**Installation Instructions**  
**CONTRACTORS RACK**  
**PART # 18604**



(Fig K)



(Fig L)



(Fig M)



(Fig N)

**STEP 7:** Install the front hoop to the front side rails using M10x70 bolt set. (Fig L, M)  
(Make sure the air deflector is pointing down.) You may tighten completely at this time

**STEP 8:** General assembly is now complete. It is time to size the rack now.

**For Technical Support/Warranty Information please call 310-762-9944**

**Smittybilt, 400 West Artesia Blvd, Compton, CA 90220 / [www.smittybilt.com](http://www.smittybilt.com)**





# Installation Instructions

## CONTRACTORS RACK

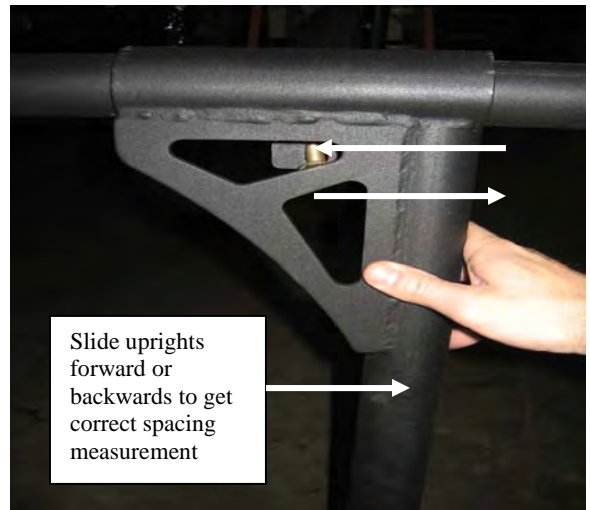
### PART # 18604

### INSTALLTION OF RACK

**STEP 9:** Measure the length of the top rail on your truck bed with the tailgate closed. Subtract 3 ½” from this measurement, this gives you the approximate spacing needed between the front and rear uprights. Adjust your front uprights by sliding them forward or backwards to match this measurement. (Fig O, P) Once position is correct tighten bolts snug, but not completely.



(Fig O)

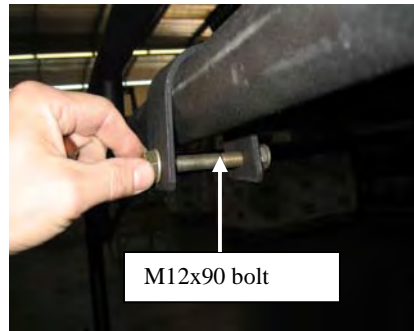


(Fig P)

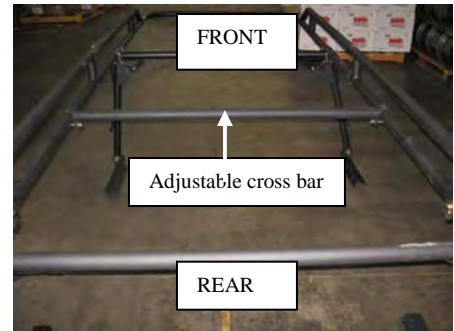
**STEP 10:** Place the adjustable cross bar (#11) in the desired location. This bar can always be moved around depending on the size and weight of your load. (Fig Q,R,S) Attach using two M12x75 bolt sets. You may tighten completely at this time.



(Fig Q)



(Fig R)



(Fig S)

For Technical Support/Warranty Information please call 310-762-9944



## Installation Instructions CONTRACTORS RACK PART # 18604

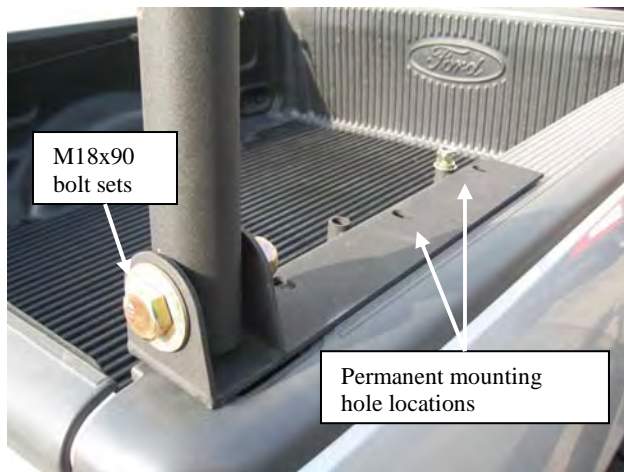
**NOTE: Take caution in the following steps in order to protect the finish of your rack and vehicle. The following steps will require the help of additional personnel.**

**STEP 11:** Your rack is now ready to be installed on your vehicle.  
Carefully lift the rack onto the side bed rails of your vehicle aligning the mounting plates as close as possible to the corners of the bed rail. (Fig T)  
The uprights and mounting plates can be adjusted while the rack is resting on the vehicle bed rail.

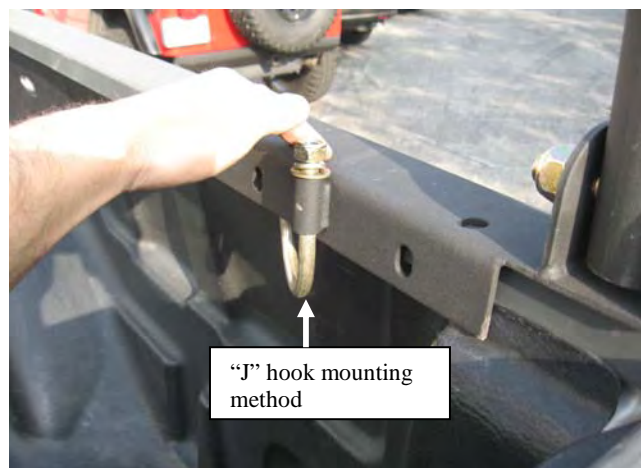
**STEP 12:** Once the desired location of the rack has been decided you can secure the mounting plates on the bed rail .This can be done two different ways, using (1) “J Hooks or (2) bolting it down.

1. Slide the “J” hook up through the sleeve in the mounting plate and secure with washer and nut. Make sure the plate on the end of the “J” hook is resting flush underneath the bed rail. (FigU)
2. Use the mounting plate as a template to mark and drill 7/16” holes through your bedrail. Be sure to check underside for any obstructions. Attach with M12x50 bolt sets.

**Secure mounting plates to bed rail completely at this time.**



(Fig T)



(Fig U)

**STEP 13:** Standing in front of the vehicle to check the horizontal alignment of the front hoop in relation to the top of the vehicle. Have an assistant push or pull the rack side to side in order to have the front hoop become parallel with the top of the vehicle (Fig V)

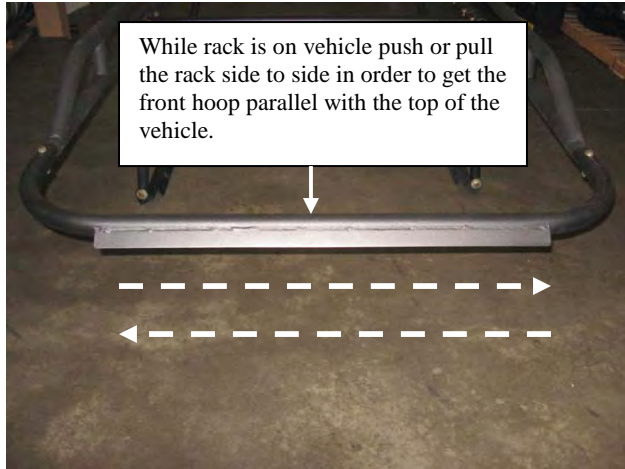
**For Technical Support/Warranty Information please call 310-762-9944**



# Installation Instructions

## CONTRACTORS RACK

### PART # 18604



(Fig V)



(Fig W)

**STEP 14:** When you are satisfied with the alignment of the rack proceed to securely tighten all four M18x19 bolts that hold the uprights to the mounting plates. (Fig T)  
Now proceed to securely tighten the two M12x50 bolts that hold the uprights to the side rails. (8 total) (Fig B)

**CHECK TO MAKE SURE ALL HARDWARE IS COMPLETELY TIGHT AT THIS TIME.  
INSTALLATION IS NOW COMPLETE**

**NOTE:** In order to load tall items you may remove the rear cross bar by simply removing the four quick release pins. (Fig W) Be sure to re-attach bar and fasten after loading.

**DO NOT CARRY LOAD WITHOUT REAR CROSS BAR**

### CLEANING

To keep your rack finish looking good, you can simply wash with a soft rag and mild soap.

### Warning

Rollover and other types of vehicle accidents may result in serious injury or death to you, your passengers and others sharing the road. Smittybilt accessories are decorative and are not intended to reduce or avoid injury or damage in the event of an accident. The weight and location of Smittybilt accessories may affect your vehicles' handling, stability and performance, creating an increased risk of accident or rollover. Before installing any accessory, check state laws and assure that the accessory will not obscure any lights or interfere with proper operation on your vehicle's safety equipment. Consult your owner's manual and the Smittybilt instructions, or additional safety information. Smittybilt products, nor the warnings contained herein, are not a substitute for your safe driving. Don't drink and drive, always use seat belts and don't drive faster than conditions permit.

**For Technical Support/Warranty Information please call 310-762-9944**

**Smittybilt, 400 West Artesia Blvd, Compton, CA 90220 / [www.smittybilt.com](http://www.smittybilt.com)**



## **Installation Instructions** **CONTRACTORS RACK** **PART # 18604**

### **Limited Warranties**

Smittybilt's products are covered under the following limited warranties only. Note that the duration of the limited warranty differs according to the material and finish of the product purchased. Subject to the duration and conditions of the limited warranty stated below, Smittybilt warrants to the original retail purchaser that its products are free from defects in material and workmanship. All other warranties and representations express or implied, are hereby disclaimed, including fitness for merchantability and buyer's intended use or purpose. All parts are sold "AS IS" except for the limited warranties granted herein. Buyer assumes all risks as to the selection, suitability and performance of all goods and products selected. This limited warranty does not cover damage or impairment in any part due to misuse, improper installation, accident or contact with on-road or off-road hazards, product modification, improper or inadequate cleaning and/or maintenance. Smittybilt is not responsible for items damaged during shipping. This warranty is not transferable from the original buyer. For the original Buyer to be eligible for the limited warranty coverage, the Buyer must provide proof of purchase. Smittybilt strongly recommends returning the warranty registration card.

Customer's remedy hereunder shall be limited only to repair or replacement (at Smittybilt's option) of any defective part(s) returned to Smittybilt at customer's expense. The determination of whether or not a returned part is defective or subject to coverage under the limited warranties stated herein shall be made at Smittybilt's sole discretion.

To assure product quality, Smittybilt reserves the right to change product design, material, specification and finishes without prior notice to customers. This limited warranty gives you specific legal rights and you may also have other rights, which may vary from state to state. Some states do not allow limitations on how long an implied warranty lasts, so the above limitations may not apply as to you. Also, some states do not allow the exclusion or limitation of incidental or consequential damages, so the above limitations or exclusions may not apply to you. Smittybilt reserves the right to discontinue product lines and substitute products, or provide other remedies than those listed in this limited warranty for those discontinued products.

#### **Requesting Warranty Coverage**

To make a claim under this limited warranty, customer must:

(1) Call Smittybilt, at (888) 717-5797 for a return authorization code (RAC) and/or Smittybilt may require photographic proof of defect before issuing an (RAC); (2) return the defective part, properly packaged to prevent further damage to the product, postage prepaid, together with dated proof of purchase receipt and identifying return authorization code (RAC) on the outside of the packaging to Smittybilt at 1600 Walnut Parkway, Compton, CA 90220. Warranty claims can not be determined until the returned merchandise is inspected. A minimum charge of fifteen percent (15%) may be added for all products which are determined to be returned for reasons other than warranty. Additional charges may be applied if merchandise is damaged or un-sellable upon receipt.

**For Technical Support/Warranty Information please call 310-762-9944**

---

**Smittybilt, 400 West Artesia Blvd, Compton, CA 90220 / [www.smittybilt.com](http://www.smittybilt.com)**